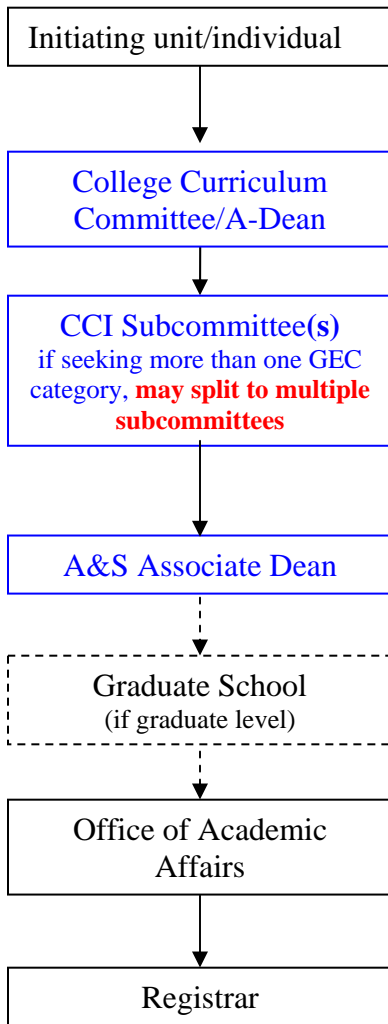


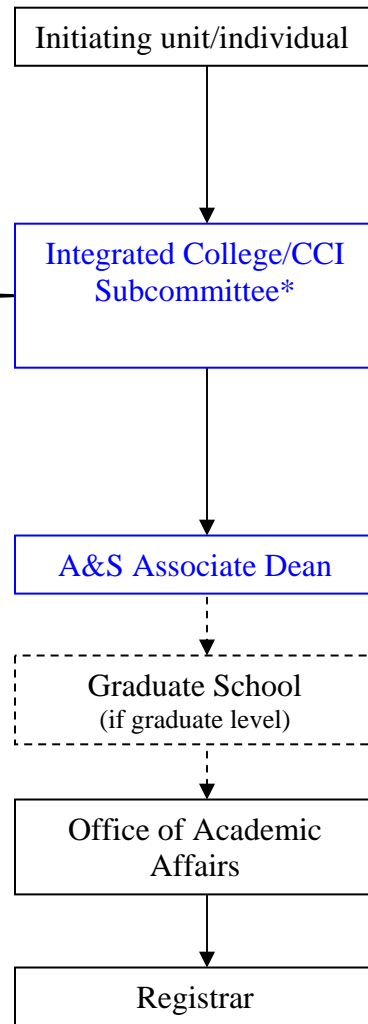
CURRENT

**GEC Individual
Course Requests:**



**POTENTIAL
DISCIPLINE-BASED**

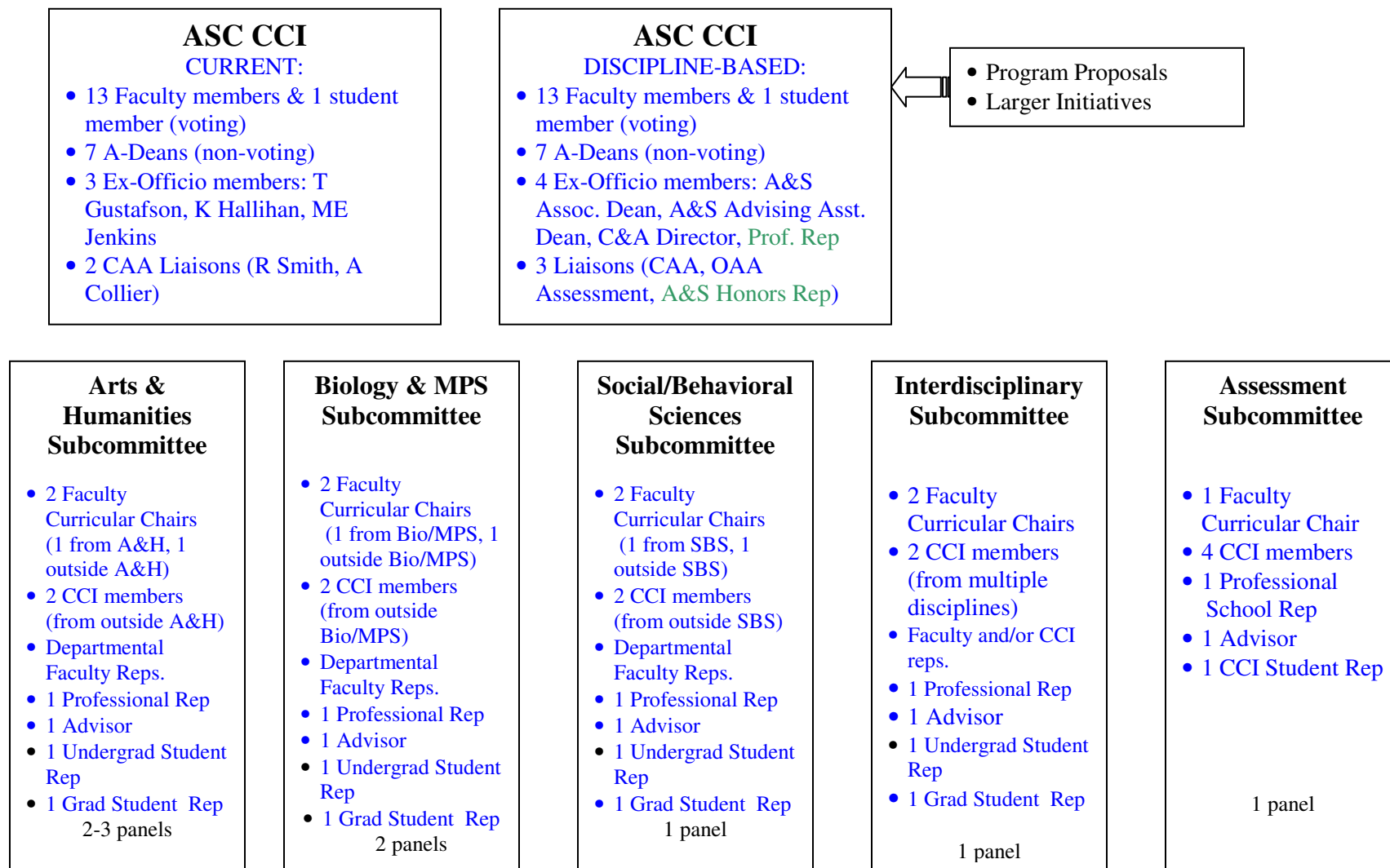
**GEC Individual
Course Requests:**



* Curricular requests are assigned to disciplinary subcommittee based on initiating unit/individual, and are vetted for all GEC categories requested in the same committee (no splitting). Non-A&S course requests applying for GEC status are vetted by a disciplinary subcommittee based on workload.

CURRICULAR APPROVAL PROCESS For A&S non-honors courses and curricula

Potential Discipline-Based Model



Curricular requests (GEC and non-GEC courses, major and minor program proposal) are assigned to subcommittee based on initiating unit/individual. Each subcommittee vets all aspects of assigned requests (i.e. all requested GEC categories regardless of GEC area.) Non-A&S course requests applying for GEC status are vetted by a disciplinary subcommittee based on workload. Major and minor proposals vetted by full CCI after subcommittee approval

HYPOTHETICAL Rosters

A&H- Panel 1

1. Julia Watson, Fac Curr Ch
2. Dave Andereck, Fac Curr Ch
3. Doug Pride, CCI
4. Bill Liddle, CCI
5. Amy Treboni, Advising
6. Ug Student Representative
7. Gr Student Representative
8. Mandy Fox (COTA)
9. Scott Schwenter (HUM)
10. Christian Kleinbub (COTA)
11. Frank Proano (HUM)

A&H- Panel 2

1. Julia Watson, Fac Curr Ch
2. Dave Andereck, Fac Curr Ch
3. John Harder, CCI
4. Amy Treboni, Advising
5. Ug Student Representative
6. Gr Student Representative
7. Mike Bruce (COTA)
8. Jeff Haase (COTA)
9. Maria Palazzi (COTA)
10. Randy Roth (HUM)
11. Lisa Shabel (HUM)

A&H- Panel 3

1. Julia Watson, Fac Curr Ch
2. Dave Andereck, Fac Curr Ch
3. Larry Krissek, CCI
4. Amy Treboni, Advising
5. Ug Student Representative
6. Gr Student Representative
7. Kevin Tavin (COTA)
8. Adeleke Adeeko (HUM)
9. Jennifer Siegel (HUM)
10. Marc Ainger (COTA)

Bio/MPS- Panel 1

1. Caroline Breitenberger, Fac Curr Ch
2. Deborah Haddad, Fac Curr Ch
3. Chris Highley, CCI
4. Bebe Miller, CCI
5. Joel Shelton, Advising
6. Ug Student Representative
7. Gr Student Representative
8. Biao Ding (BIO)
9. Greg Booten (BIO)
10. Richard Hughes (MPS)
11. Marc Pinsonneault (MPS)
12. Thomas Hetherington (BIO)
13. Christopher Hadad (MPS)
14. Ron Solomon (MPS)

Bio/MPS- Panel 2

1. Caroline Breitenberger, Fac Curr Ch
2. Deborah Haddad, Fac Curr Ch
3. Don Hubin, CCI
4. Daniel Avorgbedor, CCI
5. Joel Shelton, Advising
6. Ug Student Representative
7. Gr Student Representative
8. Chuck Daniels (BIO)
9. Hay-Oak Park (BIO)
10. Peter Craigmile (MPS)
11. Tim Long (MPS)
12. Zucai Suo (BIO)
13. Neelam Soundarajan (CSE)

SBS

1. Gene Mummy, Fac Curr Ch
2. Valerie Williams, Fac Curr Ch
3. Jim Fredal, CCI
4. John Giffin, CCI
5. Tony Valle, Advising
6. Ug Student Representative

7. Gr Student Representative
8. Jay Hobgood (Geog)
9. Scott McGraw (Anthr)
10. Amy Nathanson (Comm)
11. Mike Vasey (Psych)
12. Bruce Weinberg (Econ)
13. Paul Bellair (Socio)
14. Rebecca McCauley (Sp&Hrng)

Interdisciplinary

1. Terry Gustafson/Jessica Mercerhill (rep), Fac Curr Ch
2. Rebecca Harvey, CCI
3. Merijn van der Heijden, Advising
4. Ug Student Representative
5. Gr Student Representative
6. Nancy Rudd (EHE)
7. SBS Representative
8. MPS Representative
9. HUM Representative
10. BIO Representative
11. COTA Representative
12. INTERDISC Representative

Assessment

1. Dave Andereck, A-Dean
2. Harald Vaessin, CCI
3. Mark Shanda, CCI
4. Mary Ellen Jenkins, Advising/CCI
5. CCI Student Representative
6. Alexis Collier, CCI
7. Mike Trudeau, CCI
8. Kay Halasek
9. Kathleen Hallihan
10. Professional Representative